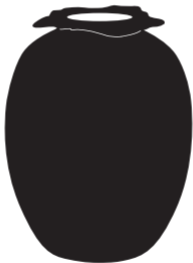


Brim

Design by
Ann Kristin Einarsen

Care and use
instructions



Northern

Warnings

1. Indoor use only.
2. Be careful when unwrapping the product, not to damage the surface.
3. Place the vase on a smooth and solid surface.
4. Do not overfill the vase to avoid spillage.
5. To avoid condensation under the vase, we recommend to fill with room temperature water or use soft pads.

Cleaning instructions

1. Clean using a soft, slightly dampened cotton cloth.
2. Avoid strong cleaning agents as it may damage and leave stains on the material.